


[TFR List](#)
[TFR Map](#)
[Map Airports](#)
[TFR Help](#)
[PilotWeb](#)
[SUA](#)

NOTAM

Number :

FDC 9/8280 Download shapefiles

Issue Date :

January 30, 2019 at 1531 UTC

Location :

Palm Beach, Florida

Beginning Date and Time :

February 01, 2019 at 2300 UTC

Ending Date and Time :

February 04, 2019 at 0330 UTC

Reason for NOTAM :

Temporary flight restrictions for VIP Movement

Type :

VIP

Replaced NOTAM(s) :

N/A

Jump To:

[Affected Areas](#)
[Operating Restrictions and Requirements](#)
[Other Information](#)

Affected Area(s)

Area A

Airspace

Definition:

Center: On the PALM BEACH VORTAC (PBI) 094 degree radial at 1.6 nautical miles. (Latitude: 26°40'47"N, Longitude: 80°03'27"W)

Radius: 30 nautical miles

Altitude: From the surface up to and including 17999 feet MSL

Excluding On the PALM BEACH VORTAC (PBI) 349 degree radial at 30.9 nautical miles. (Latitude: 27°10'54"N, Longitude: 80°13'17"W)

Center: 2 nautical miles

Radius: From the surface up to and including 17999 feet MSL

Excluding On the FORT LAUDERDALE VOR/DME (FLL) 004 degree radial at

Center: 7.4 nautical miles. (Latitude: 26°11'50"N, Longitude: 80°10'14"W)

Radius: 2 nautical miles

Altitude: From the surface up to and including 17999 feet MSL

Effective

Date(s):

From February 01, 2019 at 2300 UTC (February 01, 2019 at 1800 EST)

To February 04, 2019 at 0330 UTC (February 03, 2019 at 2230 EST)

Area B

Airspace

Definition:

Center: On the PALM BEACH VORTAC (PBI) 094 degree radial at 1.6 nautical miles. (Latitude: 26°40'47"N, Longitude: 80°03'27"W)

Radius: 10 nautical miles

Altitude: From the surface up to and including 17999 feet MSL

Effective

Date(s):

From February 01, 2019 at 2300 UTC (February 01, 2019 at 1800 EST)

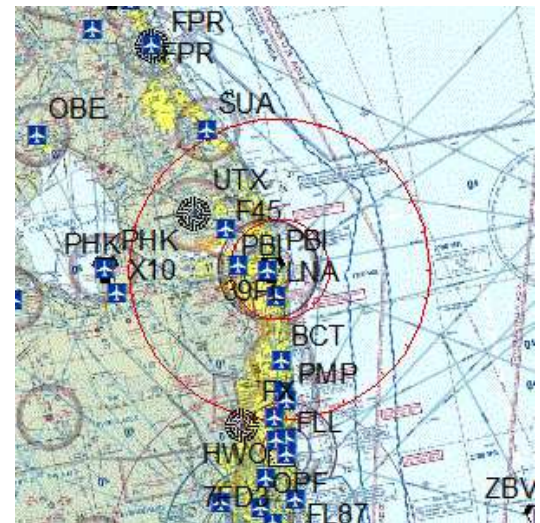
To February 04, 2019 at 0330 UTC (February 03, 2019 at 2230 EST)

Operating Restrictions and Requirements

No pilots may operate an aircraft in the areas covered by this NOTAM (except as described).

Except as specified below and/or unless authorized by ATC in consultation with the air traffic security coordinator via the domestic events network (DEN):

A. All aircraft operations within the 10 NMR area(s) listed above, known as the inner core(s), are prohibited except for: Approved law enforcement, military aircraft directly supporting the United States Secret Service (USSS) and the office of the President of the United



Top

[Click for Sectional](#)
[NOTAM Text](#)

Top

States, approved air ambulance flights, and regularly scheduled commercial passenger and all-cargo carriers operating under one of the following TSA-Approved standard security programs/procedures: aircraft operator standard security program (AOSSP), full all-cargo aircraft operator standard security program (FACAOSSP), model security program (MSP), twelve five standard security program (TFSSP) all cargo, or all-cargo international security procedure (ACISP) and are arriving into and/or departing from 14 cfr part 139 airports. All emergency/life saving flight (medical/law enforcement/firefighting) operations must coordinate with ATC prior to their departure at 561-684-9047 to avoid potential delays.

B. For operations within the airspace between the 10 nmr and 30 nmr area(s) listed above, known as the outer ring(s): All aircraft operating within the outer ring(s) listed above are limited to aircraft arriving or departing local airfields, and workload permitting, ATC may authorize transit operations. Aircraft may not loiter. All aircraft must be on an active IFR or filed VFR flight plan with a discrete code assigned by An Air Traffic Control (ATC) facility. Aircraft must be squawking the discrete code prior to departure and at all times while in the TFR and must remain in two-way radio communications with ATC.

C. All flight operations not covered in paragraph A. within the 10 NMR area must be security screened by TSA at a gateway airport prior to arriving or departing Palm Beach International Airport (KPBI). Aircraft operators must register with the TSA for gateway screening no less than 24 hours prior to their scheduled departure time. Reservations for screening may begin on 01/30/2019 and last through the duration of the event by calling TSA at 561-616-9650.

D. Gateway airports have been created at Palm Beach International Airport (KPBI), Orlando International Airport (KMCO), Fort Lauderdale International Airport (KFL), Dulles International Airport (KIAD), Teterboro Airport (KTEB), and Westchester CO. Airport (KHNP) by TSA to accommodate aircraft arriving or departing Palm Beach International Airport (KPBI).

E. TSA SCREENING WILL BE AVAILABLE DAILY 0800-1700 LOCAL EFFECTIVE 1902021300 UTC (0800 LOCAL 02/02/19) TO 1902032200 UTC (1700 LOCAL 02/03/19). PILOTS, CREW AND PASSENGERS MUST PROVIDE VALID GOVERNMENT-ISSUED PHOTO IDENTIFICATION TO THE TSA AT THE GATEWAY AIRPORT. GATEWAY SCREENING WILL INCLUDE ID VERIFICATION AND VETTING OF ALL PILOTS, CREW AND PASSENGERS, SCREENING OF PERSONS AND BAGGAGE, AND INSPECTION OF THE AIRCRAFT. NO FIREARMS ON BOARD AIRCRAFT WILL BE AUTHORIZED.

F. On departure from a gateway airport aircraft must maintain radio contact with ATC and continuously squawk an ATC-assigned discrete code. Intermediate stops while enroute are not authorized unless an emergency exists.

G. The following operations are not authorized within this TFR: flight training, practice instrument approaches, aerobatic flight, glider operations, parachute operations, ultralight, hang gliding, balloon operations, agriculture/crop dusting, animal population control flight operations, banner towing operations, sightseeing operations, maintenance test flights, model aircraft operations, model rocketry, unmanned aircraft systems (UAS), and utility and pipeline survey operations.

H. UAS OPERATORS WHO DO NOT COMPLY WITH APPLICABLE AIRSPACE RESTRICTIONS ARE WARNED THAT PURSUANT TO 18 U.S.C. SECTION 3056A, 10 U.S.C. SECTION 130I, AND 6 U.S.C. SECTION 121 (AS AMENDED), THE DEPARTMENT OF HOMELAND SECURITY (DHS), UNITED STATES SECRET SERVICE (USSS), AND THE DEPARTMENT OF DEFENSE (DOD) MAY TAKE SECURITY ACTION THAT RESULTS IN THE INTERFERENCE, DISRUPTION, SEIZURE, DAMAGING, OR DESTRUCTION OF UNMANNED AIRCRAFT DEEMED TO POSE A CREDIBLE SAFETY OR SECURITY THREAT TO PROTECTED PERSONNEL, FACILITIES, OR ASSETS.

I. FAA recommends that all aircraft operators check notams frequently for possible changes to this TFR prior to operations within this region.

Other Information:

ARTCC: ZMA - Miami Center
 Authority: Title 14 CFR section 91.141

[Top](#)

Depicted TFR data may not be a complete listing. Pilots should not use the information on this website for flight planning purposes. For the latest information, call your local Flight Service Station at 1-800-WX-BRIEF.



U.S. Department of Transportation
 Federal Aviation Administration
 800 Independence Avenue, SW
 Washington, DC 20591
 1-866-TELL-FAA (1-866-835-5322)

Readers & Viewers



Web Policies

[Web Policies & Notices](#)
[Privacy Policy](#)
[Accessibility](#)

Government Sites

[Transportation.gov](#)
[USA.gov](#)
[Plainlanguage.gov](#)
[Regulations.gov](#)
[Data.gov](#)

Contact Us

Customer Support:
 1-866-466-1336

Email: 7-AWA-NAIMES@faa.gov