

Date:	2/16/2017 (2/17 UTC Date)
UTC:	Approx: 0200-0331
Location:	Approx: KPHX Phoenix Sky Harbor Intl.
Tail Number / Call Sign	Southwest 4182 / Frontier 756
Description of the Situation:	After landing and vacating the runway 26 at KPHX, SW4182 and Frontier 756 collide wing tips, causing a series of communications regarding the issue and several taxiing problems for other aircraft in the surrounding area.  <a href="http://www.cbsnews.com/news/southwest-frontier-airliners-clip-wings-at-phoenix-airport/">http://www.cbsnews.com/news/southwest-frontier-airliners-clip-wings-at-phoenix-airport/</a>
Audio Source	<a href="http://www.liveatc.net/archive">www.liveatc.net/archive</a>

## Transcript:

**SW4182:** Southwest Forty one Eighty two (4182), is on visual two six (runway 26)

**Tower:** Southwest Forty one Eighty two, Phoenix Tower, traffic company three mile final, runway 26 cleared to land

**SW4182:** Cleared to land runway 26, Southwest Forty one Eighty two

---

**Tower:** Forty one Eighty two, turn left, taxi Charlie south route

**SW4182:** Forty one Eighty two

---

**Frontier 756:** Ground, Frontier Seven Fifty Six (756), push gate 25

**Ground:** Frontier Seven Fifty Six, Phoenix Ground, after Southwest past your right pushed approved

**Frontier 756:** After Southwest cleared to push, Frontier

---

**Ground:** Southwest Forty one Eighty two, continue via Charlie on south route, good day

**SW4182:** And ground, Southwest Forty one Eighty two, we just came in contact with the Frontier that was pushing over here.

**Ground:** Southwest Forty one Eighty two, roger, hold position

**SW4182:** Holding there

---

**Ground:** United 100, can you make a one eighty there without hitting the American?

**UA100:** Ahh, Affirmative, United 100,

**Ground:** I need you to make a one eighty into the west hold bay that Frontier just hit that Southwest.

**UA100:** Okay, we'll make a one hundred for the center hold bay. Is that correct?

**Ground:** Yeah, just, well just make a one eighty to the center hold bay there and then I'll loop you back around to Charlie seven

**UA100:** One Eighty

---

**Ground:** United 100, thank you, turn right at Charlie 6 and ahhh Bravo Sierra

**UA100:** Okay, we'll make Charlie 6 then to Bravo and Sierra. And we'll switch south ground on Sierra, United 100

**Ground:** Thank you it's gonna be awhile right there

**UA100:** Yeah, it sounds like it

**Ground:** I told him to hold for him, but he didn't.

---

**SW4182:** Ground, Southwest Forty one Eighty two

**Ground:** Forty one Eighty two, Ground

**SW4182:** Yes sir, yeah, we're holding position we see an Emergency vehicle here ya. Did you want us to just stay here, different frequency or stay with you?

**Ground:** Yeah, Southwest Forty one Eighty two, what assistance do you need?

**SW4182:** Ahh well, we don't need any assistance at this...at the moment but um, we came in contact with that Frontier. Where on that, I mean we were taxing on Charlie as instructed, and we're on the center line here, so I'm not really sure.....how it happened.

**Ground:** Right, Southwest Forty one Eighty two, do you need any um medical assistance or emergency equipment and can you taxi?

**SW4182:** Yeah, we will be able to taxi, but I'm just going to need to assess the situation here before we continue.

**Ground:** Southwest Forty one Eighty two, roger we'll pass that on to the city and you can hold there and you can advise when you're ready to continue.

**SW4182:** Alright, Roger.

---

**AA627:** Ground, American six twenty seven (627)

**AA627:** Ground, American six twenty seven

**Ground:** American six twenty seven, Ground

**AA627:** Yeah, we were right behind that Southwest. He is dead nuts on the center line.

**Ground:** American six twenty seven, roger

**SW4182:** I saw that. Thank you guys.

---

**Ground:** And, Southwest Forty one Eighty two, change to our frequency one three four point eight five

**SW4182:** Okay, we're doing that now.

---

**OPS4:** Ground, Ops 4

**Ground:** Ops 4, Phoenix Ground

**OPS4:** Can I get the flight numbers, of the Frontier, the aircraft here at two three?

**Ground:** Ops 4, Frontier Flight seven five six, seven five six going to Denver

**OPS4:** Got that thanks, going back to .....

---

**Frontier 756:** And ground Frontier, what is it? Ahhhh seven fifty six,

**Ground:** Frontier Flight Seven Fifty Six, Ground

**Frontier 756:** Yeah is there any way to get a hold of these operations people or umm anyone else who might give us some sort of timeline or expectations of what's happening next?

**Ground:** Frontier Flight Seven Fifty Six, Affirm, change to a monitor tower or I'm sorry. Change to a monitor frequency one three four point eight five. The Southwest is also on that frequency and then you have the city vehicles as well, the operation vehicles. So if you get a chance, ahh within their chatter you can ahh, ask for one for one of the ops vehicles, either Ops 2 or Ops 5 one of those guys, or Ops 4 and just let them know who you are and what you're requesting on that frequency.

**Frontier 756:** Okay, thank you very much.

---

**Delta 2601:** Ground, Delta twenty six zero one (2601), we're on Bravo

**Ground:** Delta twenty six zero one, Phoenix ground, ummm just hold ahh actually, you know what taxi straight ahead via Bravo, hold short of Sierra

**Delta 2601:** Delta twenty six zero one, Bravo, hold short of Sierra, We're checking with our gate right now.

**Ground:** Yeah, Delta twenty six zero one , there's a situation right by your gate, I'm not sure if you gonna be able, you're gate's open, but because of the situation going on I don't know if they want you in right now, so if you could just contact your operations who should be in contact with the city and we can hopefully get you in and if not I'll probably find a place to hold you. And actually you know what just hold for the exiting Southwest exiting the runway, if you could just hold position there.

**Delta 2601:** Holding position here for twenty six 'oh' one, talking to company they haven't heard any problems with us getting in.

**Ground:** Delta twenty six zero one, roger, I understand that. I just wanna make sure the city is ok with you going into the ramp right there, reference all the ah ...the situation there. So just stand by and let me...gimme me a minute and ah hopefully I can get the city and find out what's going on for you.

**Delta 2601:** Okay, we'll hold here.

---

**SW4182:** Hey ground Southwest forty one eighty two

**Ground:** Southwest forty one eighty two, Phoenix ground,

**SW4182:** Yes sir, I'm waiting um right now for confirmation from the company um...if um..if um they're gonna allow us to taxi back on our own power or ummm get a tug to pull us in. We got clearance from the ground ops and them and our maintenance representative is down there, but I just gotta wait and see what the higher ups say, okay?

**Ground:** Southwest forty one eighty two, roger, thank you for that, just advise intentions

**SW4182:** Okay, I will umm...yeah we're just talking to them on the on the other frequency. I'm sorry we left so long.

**Ground:** No problem, thank you, Southwest forty one eighty two

**SW4182:** Do you guys got a number up there I can call you at?

**Ground:** Southwest forty one eighty two, affirmative advise when ready to copy.

**SW4182:** Go for it.

**Ground:** Southwest forty one eighty two, area code 602-306-2674, that goes right to the tower up here.

**SW4182:** I appreciate you, thanks.

---

13346

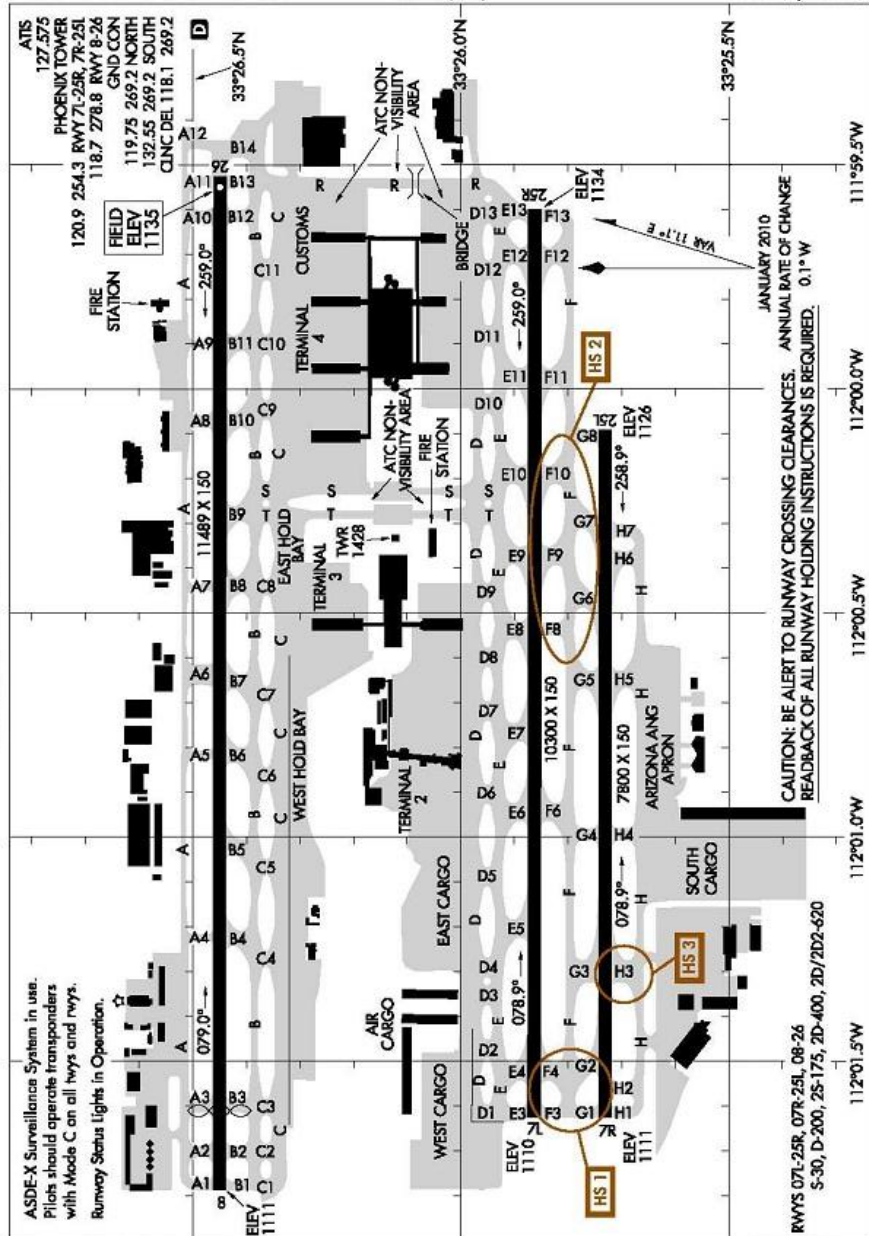
## AIRPORT DIAGRAM

AL-322 (FAA)

PHOENIX SKY HARBOR INTL (PHX)

PHOENIX, ARIZONA

SW-4, 06 FEB 2014 to 06 MAR 2014



CAUTION: BE ALERT TO RUNWAY CROSSING CLEARANCES. ANNUAL RATE OF CHANGE  
 READBACK OF ALL RUNWAY HOLDING INSTRUCTIONS IS REQUIRED. 0.1° W

RWYS 07L-25R, 07R-25L, 08-26  
 S-30, D-200, 25-175, 2D-400, 2D/2D2-620

SW-4, 06 FEB 2014 to 06 MAR 2014

## AIRPORT DIAGRAM

13346

PHOENIX, ARIZONA  
PHOENIX SKY HARBOR INTL (PHX)