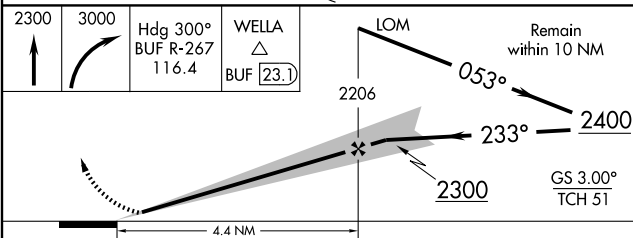
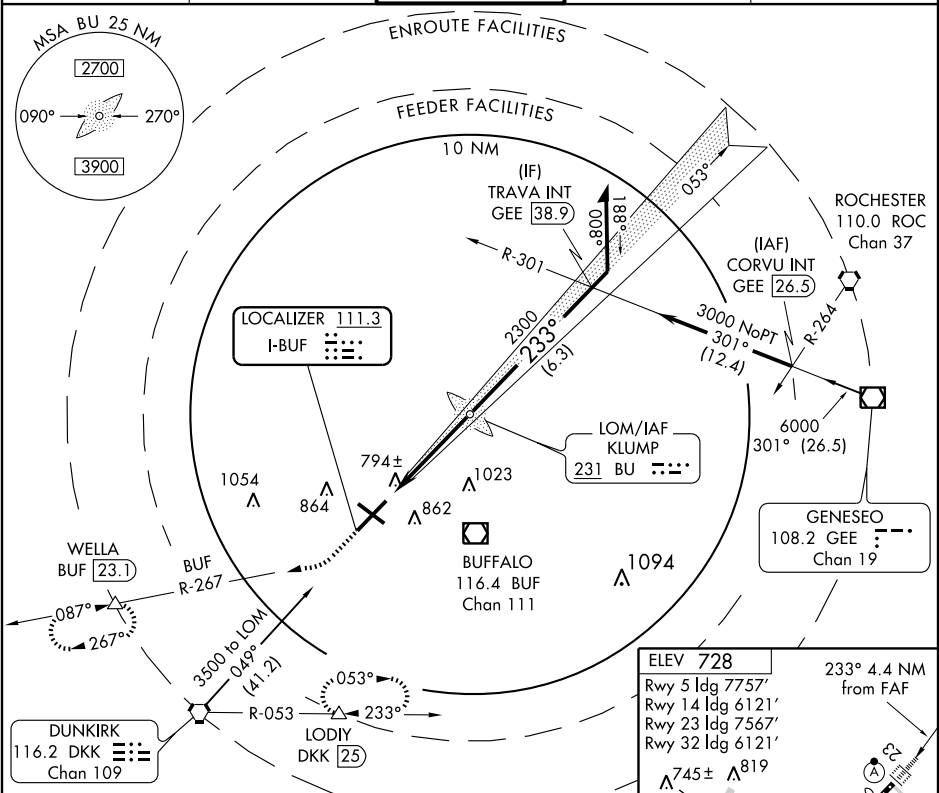


LOC I-BUF <b>111.3</b>	APP CRS <b>233°</b>	Rwy ldg <b>7567</b> TDZE <b>728</b> Apt Elev <b>728</b>
---------------------------	------------------------	---

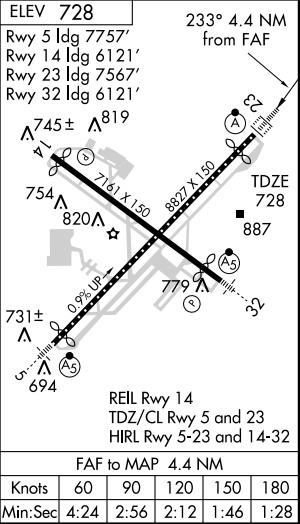
ILS or LOC RWY 23  
BUFFALO NIAGARA INTL (BUF)

For inoperative ALSF, increase S-LOC 23 Cat D visibility to RVR 5000.	MISSED APPROACH: Climb to 2300 then climbing right turn to 3000 via heading 300° and BUF R-267 to WELLA Int/BUF 23.1 DME and hold.
---	--

ATIS <b>135.35</b>	BUFFALO APP CON <b>126.15 263.125</b>	BUFFALO TOWER <b>120.5 257.8</b>	GND CON <b>121.9 257.8</b>	CLNC DEL <b>124.7 257.8</b>
-----------------------	--	-------------------------------------	-------------------------------	--------------------------------



CATEGORY	A	B	C	D
S-ILS 23	928/18		200 (200-½)	
S-LOC 23	1060/24		332 (400-½)	1060/40 332 (400-¾)
CIRCLING	1200-1	472 (500-1)	1200-1 ½ 472 (500-1 ½)	1280-2 552 (600-2)



NE-2, 15 FEB 2007 to 15 MAR 2007

NE-2, 15 FEB 2007 to 15 MAR 2007