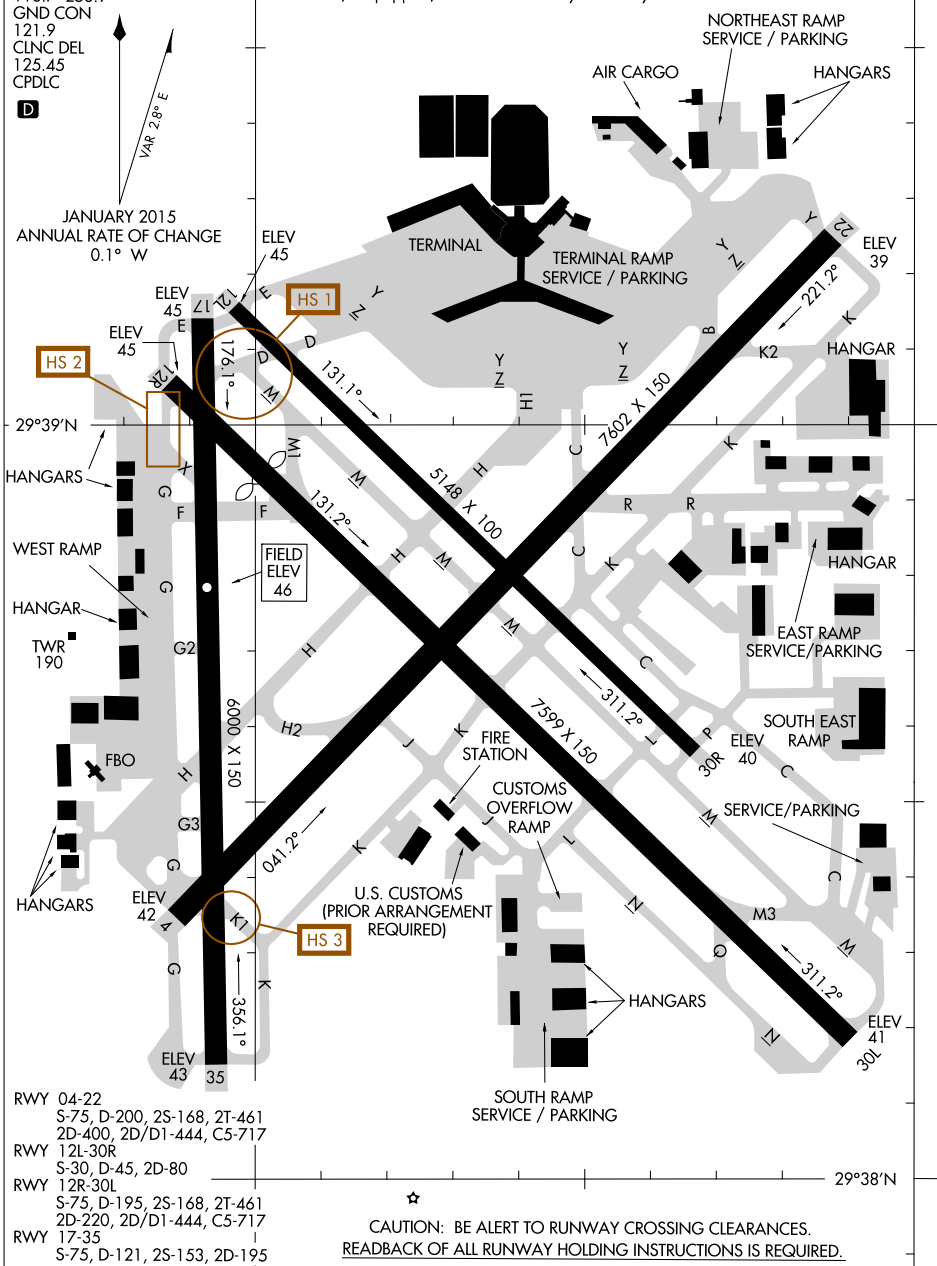


JANUARY 2015
ANNUAL RATE OF CHANGE
0.1° W

ASDE-X in use. Operate transponders with altitude reporting mode and ADS-B (if equipped) enabled on all twys and rwys.



CAUTION: BE ALERT TO RUNWAY CROSSING CLEARANCES.
READBACK OF ALL RUNWAY HOLDING INSTRUCTIONS IS REQUIRED.

AIRPORT DIAGRAM

16091

HOUSTON, TEXAS
WILLIAM P HOBBY (HOU)

SC-5, 23 JUN 2016 to 21 JUL 2016