



Federal Aviation Administration

CHARTING NOTICE

Date: March 13, 2025

To: Users of FAA U.S. Chart Supplement Northeast U.S. and Digital Chart Supplement (d-CS) Products

From: Aeronautical Information Services

Subject: DCA Cautionary Areas – High Density Helicopter and Fixed Wing Traffic

The FAA is issuing this Special Notice, effective immediately, to raise awareness of heavy concentration of helicopter and fixed wing traffic in the Ronald Reagan Washington National Airport (DCA) airspace.

This notice will be added to the FAA Chart Supplement starting in the 17 APR 2025 effective date and it will be digitally available for download on March 28th, 2025.

For questions or comments, please contact 9-AWA-AJV-A2-Apt-MapTeam@faa.gov

(See next page for Special Notice)

View Aeronautical Information Services [Safety Alerts and Charting Notices](https://www.faa.gov/air_traffic/flight_info/aeronav/safety_alerts/) at (https://www.faa.gov/air_traffic/flight_info/aeronav/safety_alerts/) for awareness of chart and data corrections. A page subscription service is available.

For awareness or participation in a public forum to identify issues concerning safety and usefulness of aeronautical charts and flight information products/services, and discuss change proposals to specifications and methodologies visit [Aeronautical Charting Meeting](https://www.faa.gov/air_traffic/flight_info/aeronav/acf/) ([Chart Group](https://www.faa.gov/air_traffic/flight_info/aeronav/acf/)) at (https://www.faa.gov/air_traffic/flight_info/aeronav/acf/). A page subscription service is available.

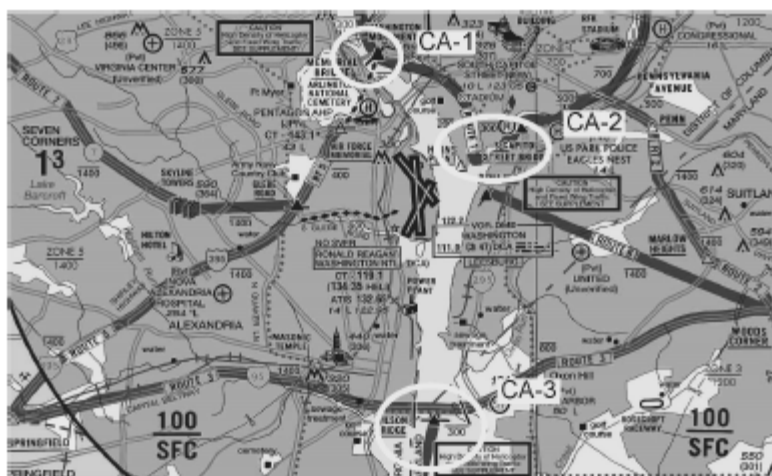
For aeronautical data or charting inquiries visit the [Aeronautical Information Portal](https://nfdc.faa.gov/nfdcApps/controllers/PublicSecurity/nfdcLogin) (<https://nfdc.faa.gov/nfdcApps/controllers/PublicSecurity/nfdcLogin>)

SPECIAL NOTICES

**CAUTIONARY AREA (CA)
HIGH DENSITY OF HELICOPTER AND FIXED WING TRAFFIC
Ronald Reagan Washington National Airport (DCA)**

Pilots should be alert in this area due to heavy concentration of IFR Jet Operations below 1500 Feet. On initial contact with DCA Tower (134.35/257.6), pilots must announce intended route and receipt of DCA ATIS Information (132.65).

- Heavy concentration of helicopter and fixed wing traffic. Pilots should avoid using Route 1 South of the Memorial Bridge to the maximum extent possible.
- All aircraft operating within the DCA Class B are required to:
 - Turn-on Anti-collision lights and aircraft position/navigation lights. Use of landing lights is recommended.
 - Have a current Baltimore-Washington Helicopter Route Chart in the aircraft and familiarize themselves with the information contained therein.



CA-1 : JPN/Memorial Bridge Transition

- Be alert for RWY 1/33 departures when DCA is in a North Configuration and RWY 15/19 arrivals when in a South Configuration.
- Be alert for JPN (Pentagon) helicopter traffic and route/zone transition area.

CA-2 : Hains Point/South Capital Region

- Be alert for helicopters operating in/out and local pattern of Joint Base Anacostia-Bolling, South Capital Street Helipad, US Park Police Eagles Nest.
- Be alert for RWY 4 departures when DCA is in a North Configuration.

CA-3 : Wilson Bridge/Zone 4

- Be alert for fixed wing arrivals to RWY 1 and circling to RWY 33.
- Be alert for Route 3, Route 4 and Zone 4 converging helicopter traffic.
- Do not loiter in Zone 4 over the Potomac River.

Office of Primary Responsibility (OPR): Washington National ATCT (DCA)
Contact Information: 703-471-1000; email: a-AJD-DCA-CPS@faa.gov
Original: March 2025