



Federal Aviation Administration

CHARTING NOTICE

Date: March 13, 2025

To: Users of the Baltimore-Washington Helicopter Route Chart

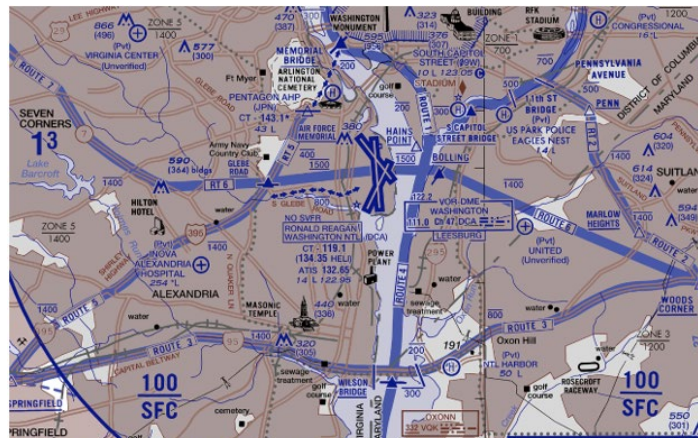
From: Aeronautical Information Services (AJV-A)

Subject: Ronald Reagan Washington International Airport (DCA) Helicopter Route Changes

Revise Helicopter Route 4, Route 6, and Route 7

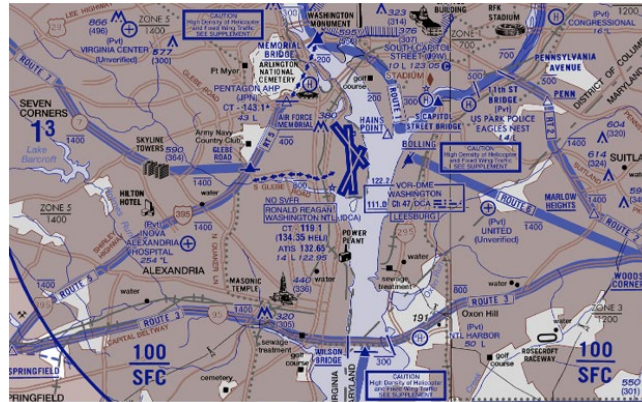
Delete helicopter route 4 from Wilson Bridge, then via East bank of Potomac River to Anacostia River. Intercept route 1 at Anacostia River. Delete helicopter route 6 from Bolling reporting point, DCT boathouse, DCT Abingdon Plantation, DCT Glebe Road. Extend Route 7 to Glebe Road.

Change from



- RT. 4: FORT WASHINGTON OVER POTOMAC RIVER TO WILSON BRIDGE. THEN VIA EAST BANK OF POTOMAC RIVER TO ANACOSTIA RIVER. INTERCEPT ROUTE 1 AT ANACOSTIA RIVER.
ALTITUDES: AT OR BELOW 1000 FEET MSL AT FORT WASHINGTON, DESCEND TO 600 FEET MSL ABEAM BROAD CREEK INLET, BEGIN DESCENT FROM 600 FEET MSL TO ARRIVE AT 300 FEET MSL OVER WILSON BRIDGE, THEN AT OR BELOW 200 FEET MSL NORTH OF WILSON BRIDGE.
- RT. 6: WOODS CORNER DIRECT TO BOLLING REPORTING POINT. DIRECT BOATHOUSE. DIRECT ABINGDON PLANTATION. DIRECT GLEBE ROAD. DIRECT SKYLINE TOWERS.
ALTITUDES: WOODS CORNER AT OR BELOW 1400 FEET MSL. CROSS BOLLING AT 1500 FEET MSL UNTIL GLEBE ROAD REPORTING POINT. THEN CROSS SKYLINE TOWERS AT OR BELOW 1400 FEET MSL. EASTBOUND TRAFFIC AT SKYLINE CLIMB TO CROSS GLEBE ROAD AT 1500 FEET MSL UNTIL BOLLING, THEN DESCEND TO AT OR BELOW 1400 FEET MSL.
- RT. 7: FROM SKYLINE TOWERS FOLLOW VIRGINIA ROUTE 7 TO TYSONS CORNER, THEN DIRECT TO WASHINGTON DULLES EAST CONTROL POINT ALONG WASHINGTON DULLES ACCESS ROAD TO RESTON INTERNATIONAL CENTER. THEN DIRECT TO THE WASHINGTON DULLES TANK FARM/ROTATING BEACON. CROSSING BETWEEN THE WASHINGTON DULLES CONTROL TOWERS. REMAIN NORTH OF RUNWAY 30. THEN SOUTH END OF BEAVERDAM CREEK RESERVOIR. THEN NORTHEAST TO U.S. HIGHWAY ROUTE 15.
ALTITUDES: AT OR BELOW 1400 FEET MSL TO DULLES EAST CONTROL POINT. THEN AT OR BELOW 1300 MSL FROM DULLES EAST CONTROL POINT TO THE WASHINGTON DULLES TANK FARM/ROTATING BEACON. THEN AT 1500 FEET MSL FROM WASHINGTON DULLES TANK FARM/ROTATING BEACON AND CROSSING RUNWAY 19R/1L. THEN AT OR BELOW 1300 FEET MSL TO HIGHWAY ROUTE 15.

To



- RT. 4: FORT WASHINGTON OVER POTOMAC RIVER TO WILSON BRIDGE. INTERCEPT ROUTE 3 AT WILSON BRIDGE.
 ALTITUDES: AT OR BELOW 1000 FEET MSL AT FORT WASHINGTON, DESCENT TO 600 FEET MSL ABEAM BROAD CREEK INLET, BEGIN DESCENT FROM 600 FEET MSL TO ARRIVE AT 300 FEET MSL OVER WILSON BRIDGE
- RT. 6: WOODS CORNER DIRECT TO BOLLING REPORTING POINT.
 ALTITUDES: AT OR BELOW 1400 FEET MSL.
- RT. 7: FROM GLEBE ROAD DIRECT TO SKYLINE TOWERS FOLLOW VIRGINIA ROUTE 7 TO TYSONS CORNER, THEN DIRECT TO WASHINGTON DULLES EAST CONTROL POINT ALONG WASHINGTON DULLES ACCESS ROAD TO RESTON INTERNATIONAL CENTER. THEN DIRECT TO THE WASHINGTON DULLES TANK FARM/ROTATING BEACON. CROSSING BETWEEN THE WASHINGTON DULLES CONTROL TOWERS. REMAIN NORTH OF RUNWAY 30. THEN SOUTH END OF BEAVERDAM CREEK RESERVOIR. THEN NORTHWEST TO U.S. HIGHWAY ROUTE 15.
 ALTITUDES: AT OR BELOW 1400 FEET MSL TO DULLES EAST CONTROL POINT. THEN AT OR BELOW 1300 FEET MSL FROM DULLES EAST CONTROL POINT TO THE WASHINGTON DULLES TANK FARM/ROTATING BEACON. THEN AT 1500 FEET MSL FROM WASHINGTON DULLES TANK FARM/ROTATING BEACON AND CROSSING RUNWAY 19R/1L. THEN AT OR BELOW 1300 MSL TO HIGHWAY ROUTE 15.

View Aeronautical Information Services [Safety Alerts and Charting Notices](https://www.faa.gov/air_traffic/flight_info/aeronav/safety_alerts/) at (https://www.faa.gov/air_traffic/flight_info/aeronav/safety_alerts/) for awareness of chart and data corrections. A page subscription service is available.

For awareness or participation in a public forum to identify issues concerning safety and usefulness of aeronautical charts and flight information products/services, and discuss change proposals to specifications and methodologies visit Aeronautical Charting Meeting (Chart Group) at (https://www.faa.gov/air_traffic/flight_info/aeronav/acf/). A page subscription service is available.

For aeronautical data or charting inquiries visit the [Aeronautical Information Portal](https://nfdc.faa.gov/nfdcApps/controllers/PublicSecurity/nfdcLogin) (<https://nfdc.faa.gov/nfdcApps/controllers/PublicSecurity/nfdcLogin>)

Published by the
 U.S. DEPARTMENT OF TRANSPORTATION
 Federal Aviation Administration

MAR 2025

VIS 25-02 CN