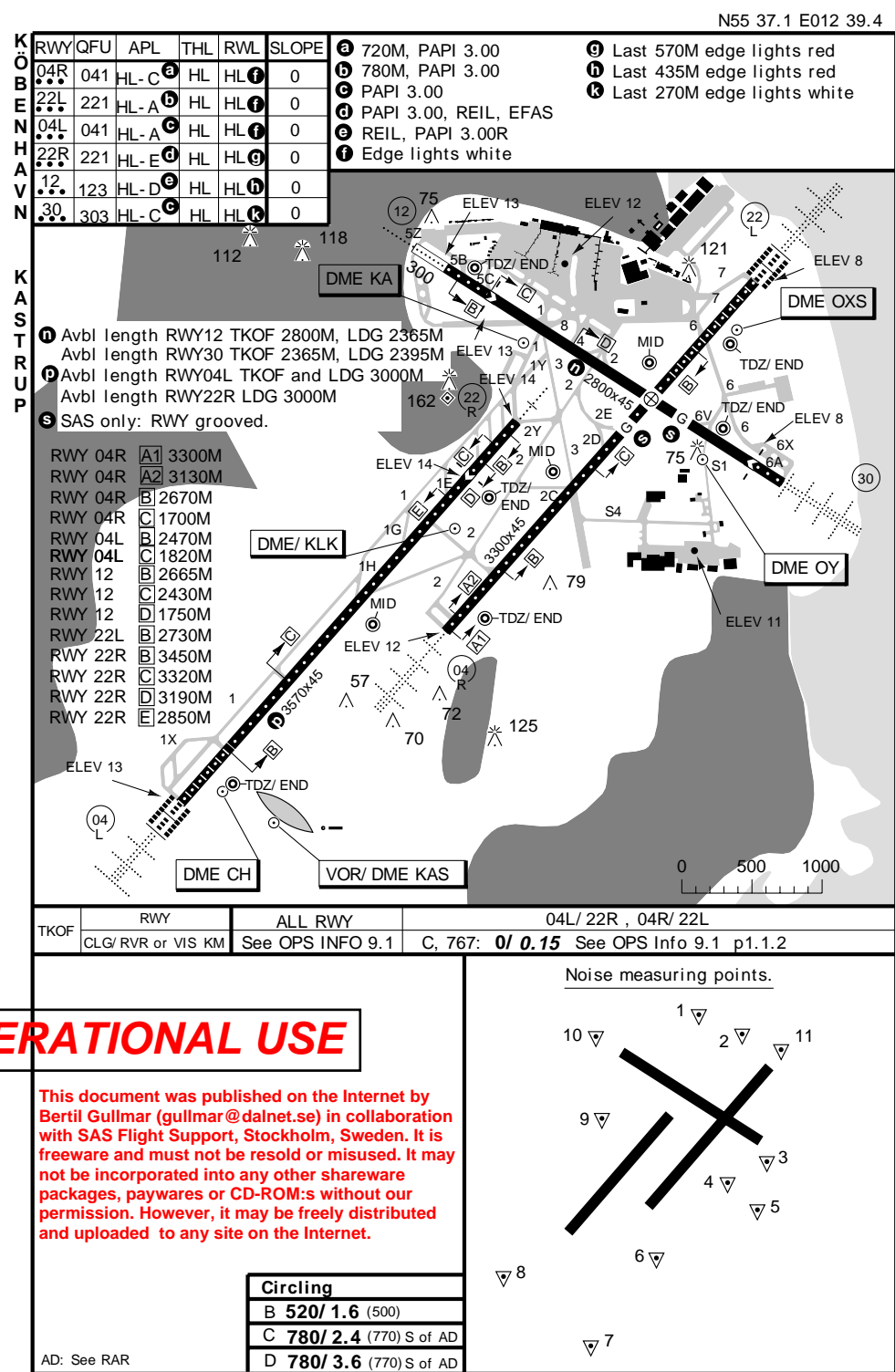
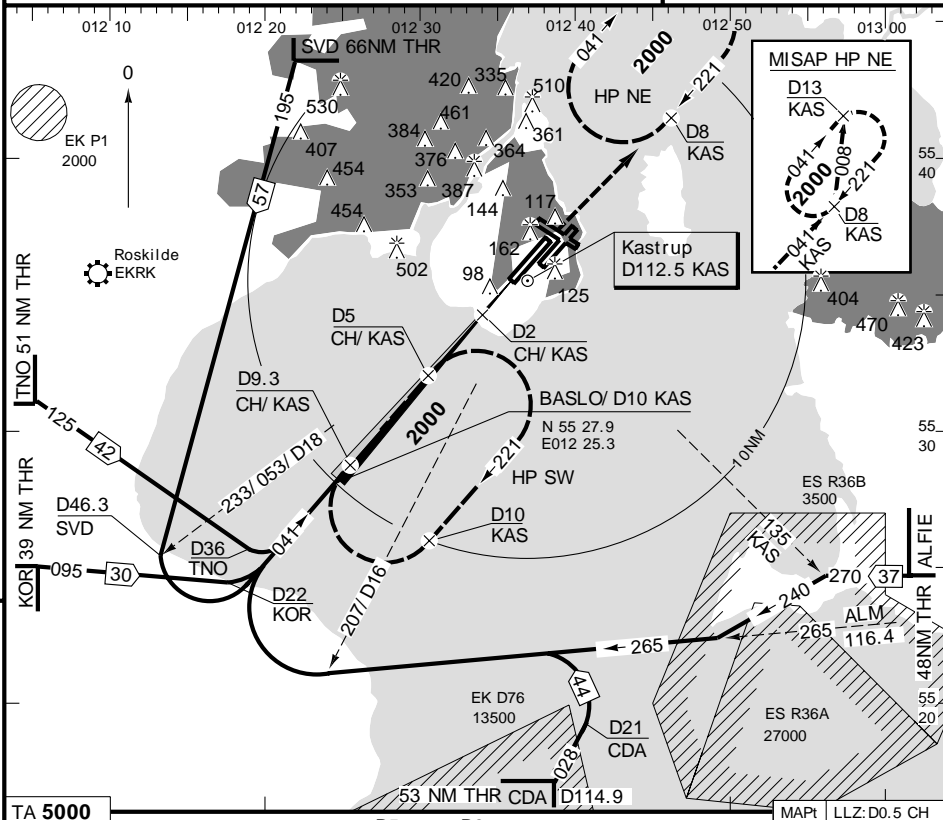


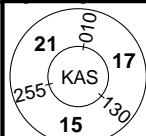
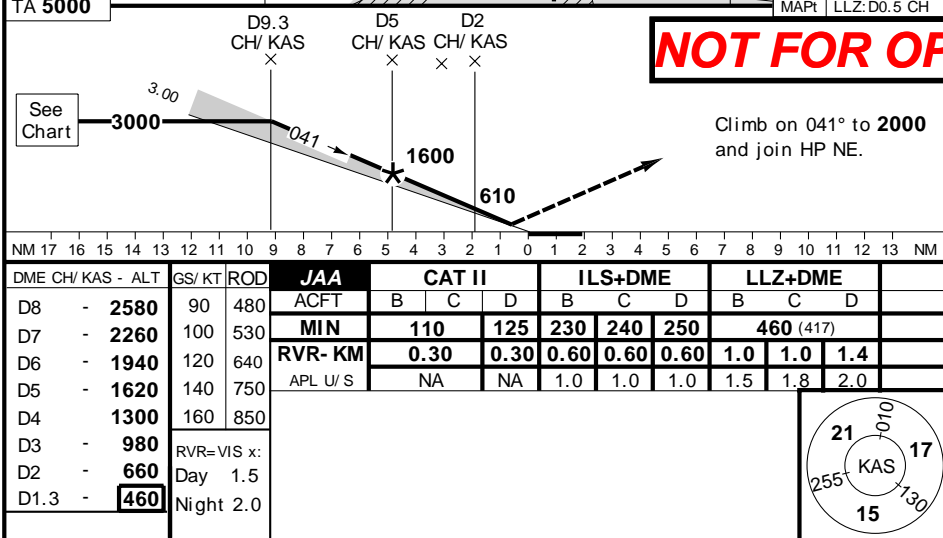
© SAS Flight Support - SAS - 2700 - Y - P



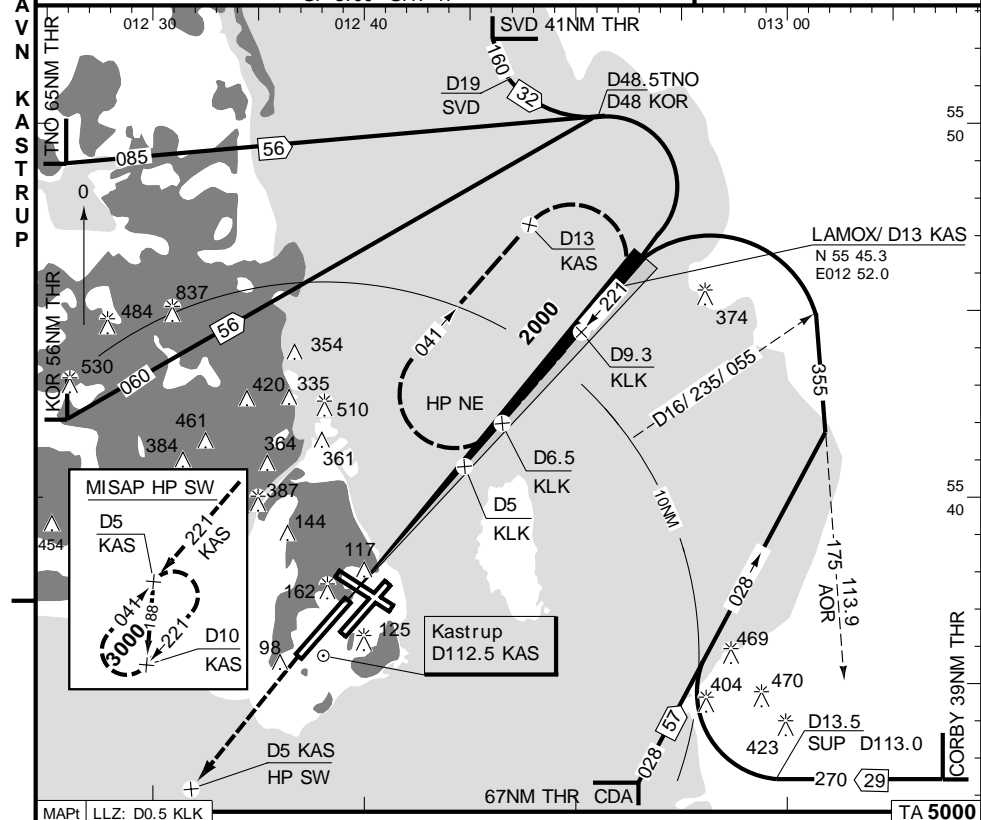
Kastrup (App: Copenhagen) CPH - EKCH **2** 21 JUL 97 ILS-04 L
 ATIS ARR 122.75 DEP 122.85
 APP RAD 119.80 *ARR 120.20 HO FINAL 119.10 HO
 TWR 118.10 118.57 *119.90 HO *119.35 HO
 GND/ APN 121.60 ARR *121.90 DEP *121.72 HO
 ILS/ DME **110.5 CH 041°** GP 3.00 GHT 49
 DEP RAD 120.25 124.97
 CUT: See GAD.
 PAPI 3.00
 LDG 3570x45/0



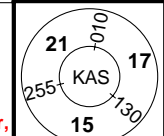
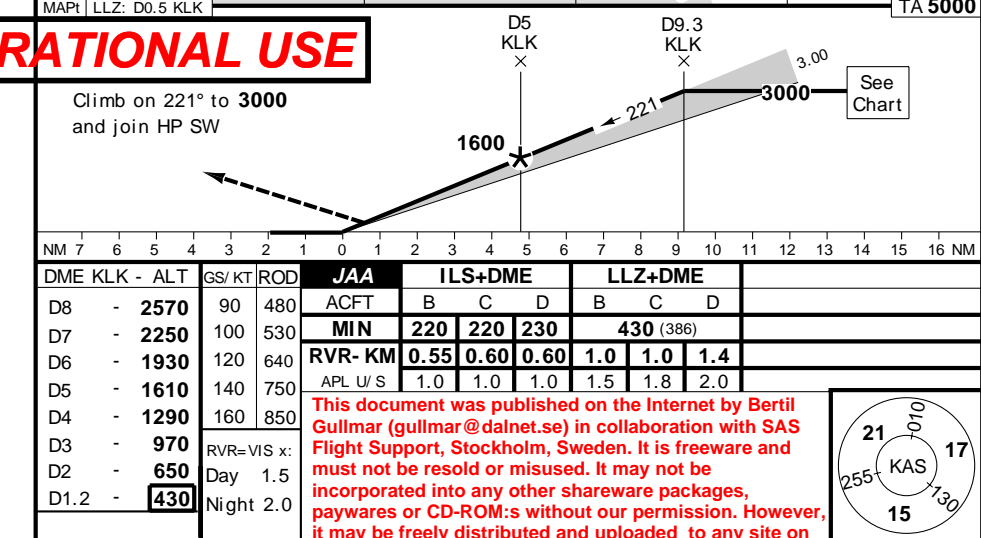
TA 5000



Kastrup (App: Copenhagen) CPH - EKCH **3** ILS- 22 R
 ATIS ARR 122.75 DEP 122.85
 APP RAD 119.80 *ARR 120.20 HO FINAL 119.10 HO
 TWR 118.10 118.57 *119.90 HO *119.35 HO
 GND/ APN 121.60 ARR *121.90 DEP *121.72 HO
 ILS/ DME **110.9 KLK 221°** GP 3.00 GHT 47
 DEP RAD 120.25 124.97
 CUT: See GAD.
 PAPI 3.00
 LDG 3000x45/0

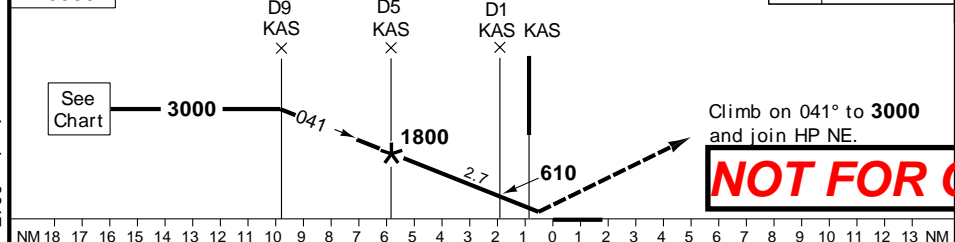
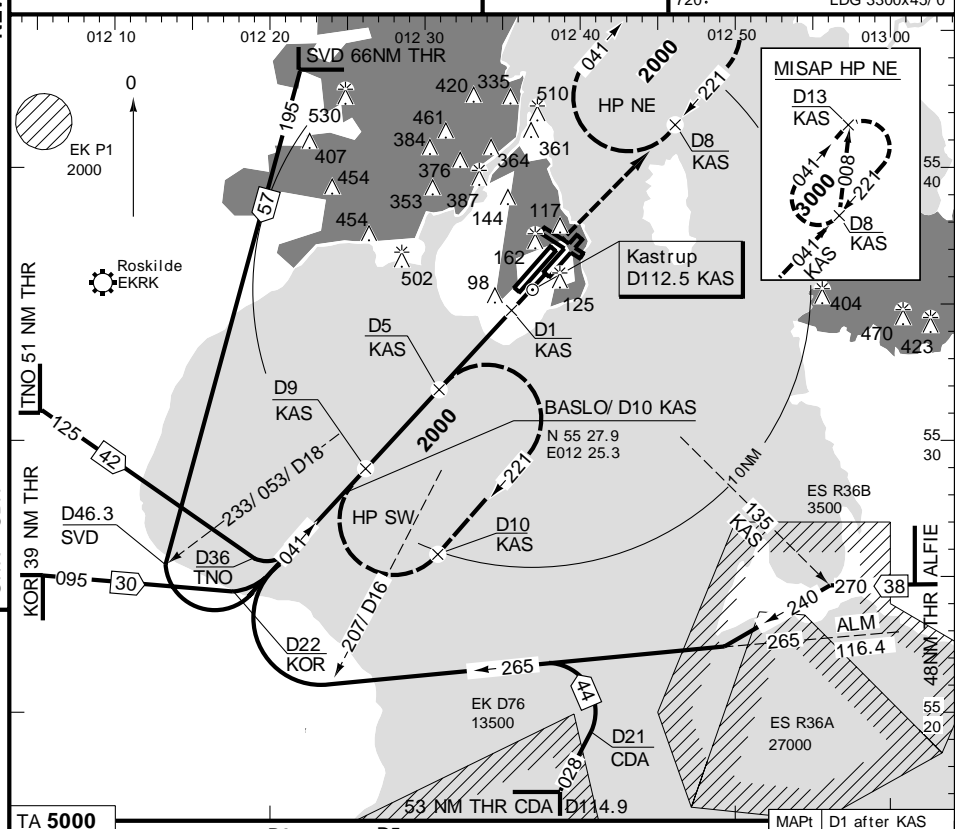


TA 5000



This document was published on the Internet by Bertil Gullmar (gullmar@dalnet.se) in collaboration with SAS Flight Support, Stockholm, Sweden. It is freeware and must not be resold or misused. It may not be incorporated into any other shareware packages, paywares or CD-ROM:s without our permission. However, it may be freely distributed and uploaded to any site on the Internet.

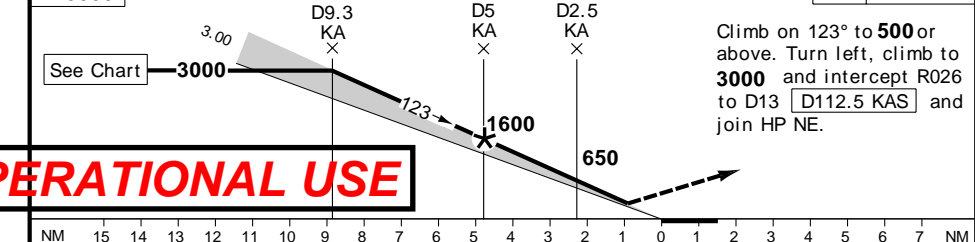
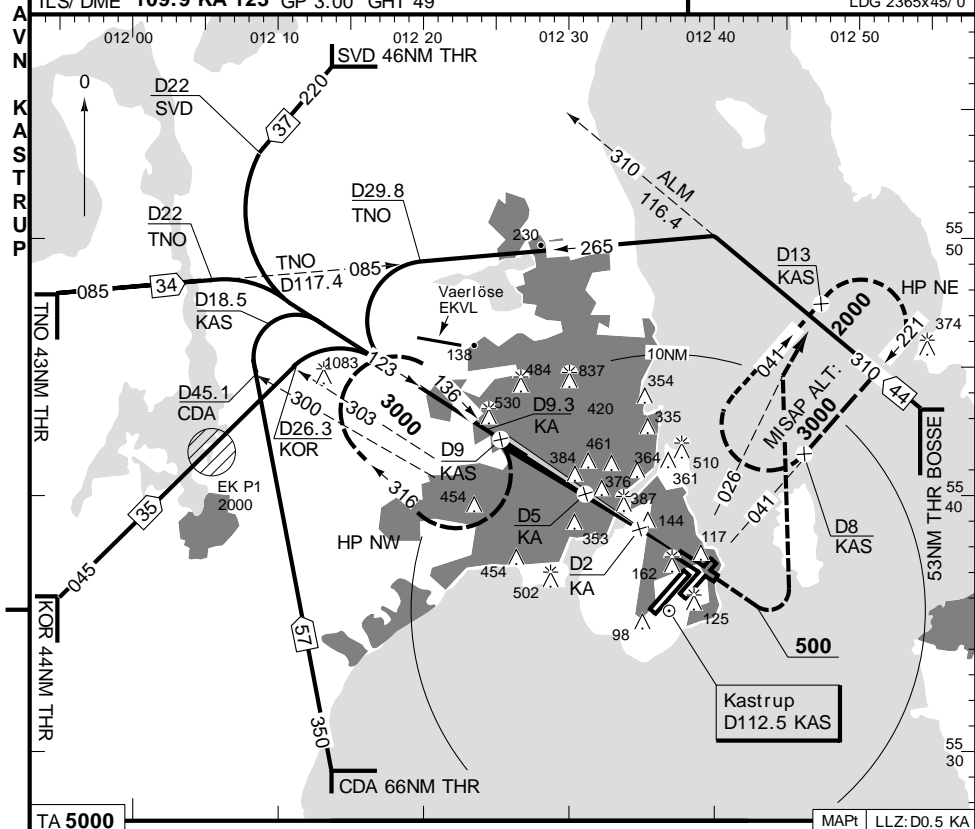
Kastrup (App: Copenhagen) CPH- EKCH **6** 21 JUL 97 VOR-04R
 ATIS ARR 122.75 DEP 122.85 CUT: See GAD.
 APP RAD 119.80 *ARR 120.20 HO FINAL 119.10HO
 TWR 118.10 118.57 *119.90HO *119.35HO
 GND/ APN 121.60ARR *121.90 DEP *121.72 HO
 DEP RAD 120.25 124.97



DME KAS - ALT	GS/ KT	ROD	JAA	VOR+DME	
D8 - 2720	90	450	ACFT	B C D	
D7 - 2420	100	500	MIN	460 (418)	
D6 - 2130	120	590	RVR- KM	1.0 1.0 1.4	
D5 - 1830	140	690	APL U/ S	1.5 1.8 2.0	
D4 - 1540	160	790			
D3 - 1240					
D2 - 950					
D1 - 650					
D0.1 - 460					

THR ELEV 12 FT/ AD ELEV 17 FT Change: TWR, GND, APL-box, Dist Min

Kastrup (App: Copenhagen) CPH- EKCH **7** ILS-12
 ATIS ARR 122.75 DEP 122.85
 APP RAD 119.80 *ARR 120.20HO FINAL 119.10HO
 TWR 118.10 118.57 *119.90HO *119.35HO
 GND/ APN 121.60ARR *121.90 DEP *121.72 HO
 DEP RAD 120.25 124.97 CUT: See GAD.



DME KA - ALT	GS/ KT	ROD	JAA	ILS+DME	LLZ+DME	
D8 - 2570	90	480	ACFT	B C D	B C D	
D7 - 2250	100	530	MIN	220 230 240	460 (417)	
D6 - 1930	120	640	RVR- KM	0.60 0.60 0.60	1.0 1.0 1.4	
D5 - 1610	140	750	APL U/ S	1.0 1.0 1.0	1.5 1.8 2.0	
D4 - 1290	160	850				
D3 - 970						
D2 - 650						
D1.3 - 460						

THR ELEV 13 FT/ AD ELEV 17 FT Change: TWR, GND, APL-box Min

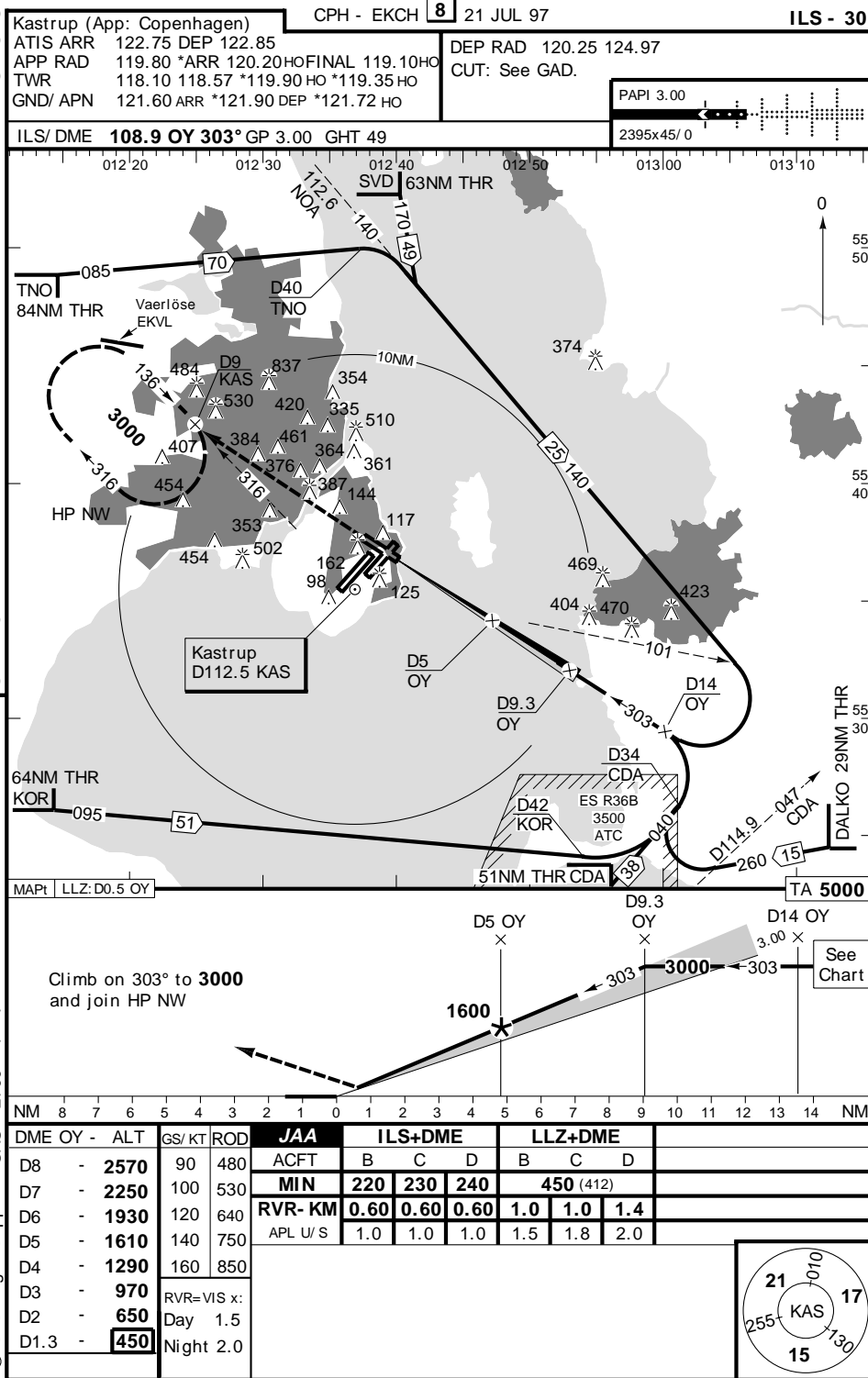
NOT FOR OPERATIONAL USE

This document was published on the Internet by Bertil Gullmar (gullmar@dalnet.se) in collaboration with SAS Flight Support, Stockholm, Sweden. It is freeware and must not be resold or misused. It may not be incorporated into any other shareware packages, paywares or CD-ROM:s without our permission. However, it may be freely distributed and uploaded to any site on the Internet.

NEW PANS - OPS

SWR - ODN

© SAS Flight Support - SAS - 2700 - Y - P



NOT FOR OPERATIONAL USE

This document was published on the Internet by Bertil Gullmar (gullmar@dalnet.se) in collaboration with SAS Flight Support, Stockholm, Sweden. It is freeware and must not be resold or misused. It may not be incorporated into any other shareware packages, paywares or CD-ROM:s without our permission. However, it may be freely distributed and uploaded to any site on the Internet.